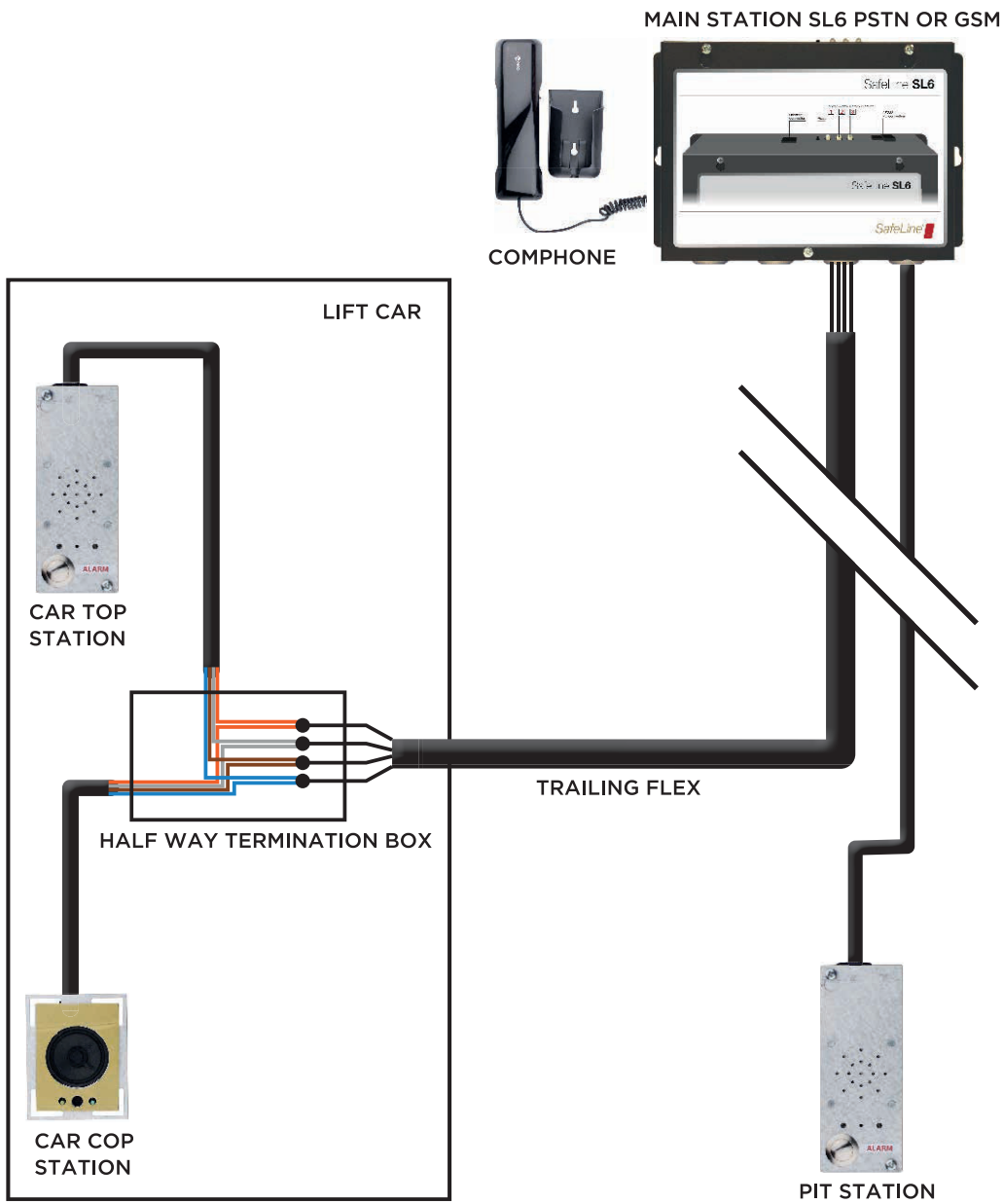


# SafeLine SL6

## Quick Start Guide

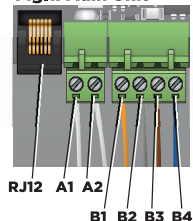


### Quick Install Guide:

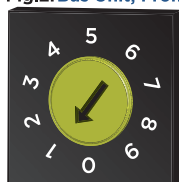
1. Install the SL6 main unit in the lift motor room. (Recommended), or on the car roof if required.
2. Connect the existing telephone line using either the RJ12 or terminals A1 and A2 in the main SL6 unit. (see Fig.1)
3. Find 4 spare wires in the trailing flex that are not close to any high voltage.
4. Connect the 4 wires into terminals B1, B2, B3 and B4 in the main SL6 unit. (see Fig.1)
5. Install the bus station (Speaker and microphone) unit in the car. Turn the address switch on the top of the bus station to 1. (see Fig.2)
6. Plug the black flat cable (supplied with bus station) into the top of the bus station using the RJ45 plug (see Fig.3). Connect the other end of the black flat cable to the trailing flex using the following wires. ORANGE = B1, GREY = B2, BROWN = B3, BLUE = B4 - with the black flat cable.
7. Connect 2 VOLT FREE wires from the car alarm button to terminals 5 and 8 on the back of the bus station - NO or NC contacts can be used. (see Fig.3)
8. Install the top of car Bus station unit on the car top. Turn the address switch to 2.
9. Plug the black flat cable (supplied with bus station) in to the top of the bus station using the RJ45 plug. Connect the other end to the same trailing cable as the car bus unit, using the following wires. ORANGE = B1, GREY = B2, BROWN = B3, BLUE = B4 - with the black flat cable.
10. Now install the pit bus station. Turn the address switch to 3.
11. Run 4 wires from the pit station to the main SL6 unit in the motor room. Connect the ORANGE = B1, GREY = B2, BROWN = B3, BLUE = B4 - using black flat cable supplied.
12. Connect the L and N to terminals F1 and F2 respectively. The earth should be connected to the earth stud on the casing. (see Fig.4)
13. Your SL6 connections should now be complete. (see Fig.5)
14. Plug the Comphone into the RJ12 socket of the SL6 main unit. Install the base of the Comphone at a convenient location for ease of use.
15. You should now hear 3 beeps when switching the unit on, this will tell you that all 3 bus stations have communication.
16. LED 1 should be stable GREEN (power to the unit), LED 3 should be flashing every 5 seconds (telephone line present ).
17. You are now ready to configure the SL6.

PLEASE REFER TO THE MANUAL FOR FURTHER INFORMATION

**Fig.1: Main Unit**

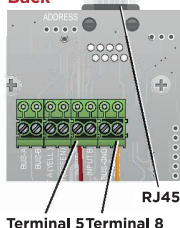


**Fig.2: Bus Unit, Front**



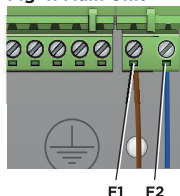
Address switch

**Fig.3: Bus Unit, Back**

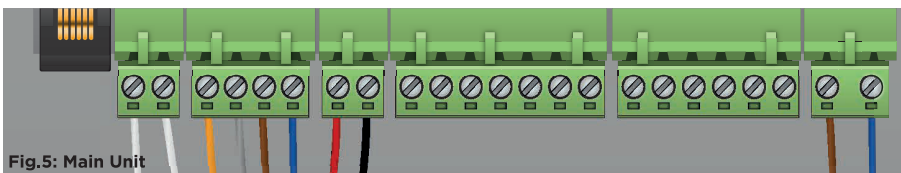


Terminal 5 Terminal 8

**Fig.4: Main Unit**

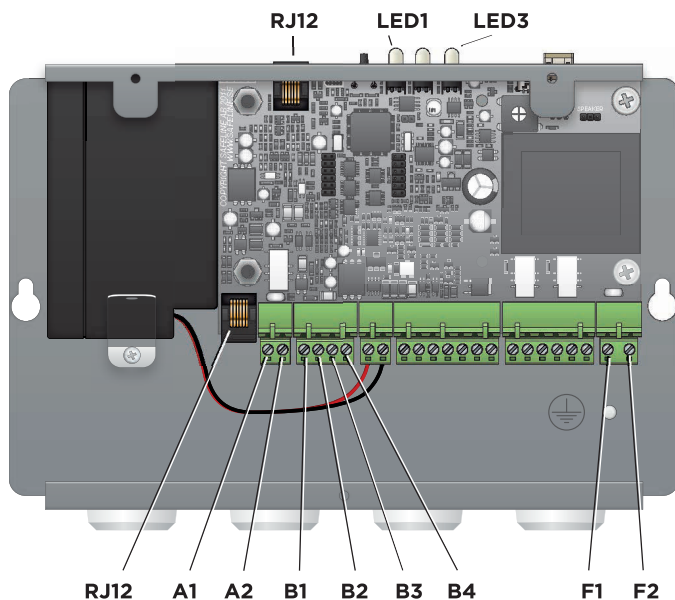


F1 F2

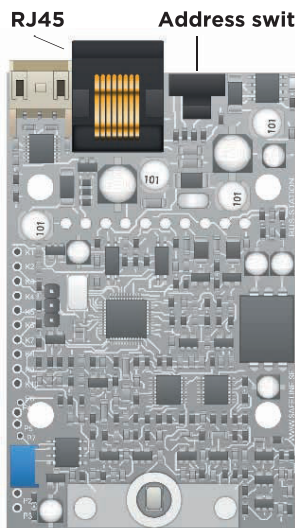


**Fig.5: Main Unit**

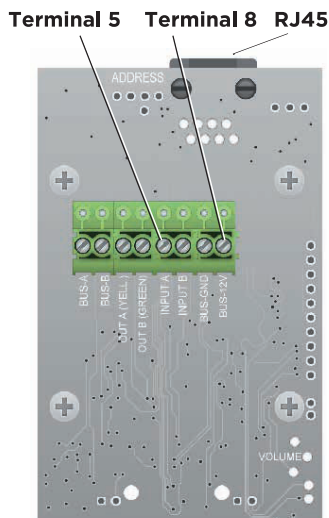
## OVERVIEW SL6 MAIN UNIT



### OVERVIEW SL6 BUS UNIT - Front



### OVERVIEW SL6 BUS UNIT - Back



### Onsite Configuration via COMPHONE

1. Press 00 to begin configuration – you will hear 2 bleeps.
2. Press \*11\* # 1st telephone number. You will hear 2 bleeps.
3. Press \*12\* # 2nd telephone number. You will hear 2 bleeps.
4. Press \*13\* # 3rd telephone number. You will hear 2 bleeps.
5. Press \*14\* # 4th telephone number. You will hear 2 bleeps.
6. Press \*87\*03# Alarm button delay time (03 = 3 seconds etc.) You will hear 2 bleeps.
7. Press \*90\*11# Configures the emergency bell on each bus station, where 1 is to switch this function on and 1 is for the address of the bus station number 1.
8. Press \*00\*# to end configuration.
9. Press the alarm button for 3 seconds to test the function of the auto dialler.

If at any point you hear 1 long bleep this means the current parameter you are trying to set has not entered. Restart that particular parameter. You do not have to re-enter all successful parameters.

### Remote Configuration via MOBILE PHONE/LANDLINE PHONE DIAL DESIGNATED TELEPHONE NUMBER FOR THE SAFELINE AUTO DIALLER

1. Press 00 to begin configuration – you will hear 2 bleeps.
2. You will now hear 3 tones.
3. Press \*0000# you will now hear 2 bleeps. You have now entered remote configuration mode.
4. Press \*11\* # 1st telephone number. You will hear 2 bleeps.
5. Press \*12\* # 2nd telephone number. You will hear 2 bleeps.
6. Press \*13\* # 3rd telephone number. You will hear 2 bleeps.
7. Press \*14\* # 4th telephone number. You will hear 2 bleeps.
8. Press \*87\*03# Alarm button delay time (03 = 3 seconds etc.) You will hear 2 bleeps.
9. Press \*90\*11# Configures the emergency bell on each bus station, where 1 is to switch this function on and 1 is for the address of the bus station number 1.
10. Press \*00\*# to end configuration.

If at any point you hear 1 long bleep this means the current parameter you are trying to set has not entered. Restart that particular parameter. You do not have to re-enter all successful parameters.

### Configuration via the SafeLine **CONNECT** App



CONNECT configuration tool for SafeLine emergency telephones – always with you.

With SafeLine CONNECT, you always have a configuration tool for SafeLine telephones with you, ready and available. Forget customized configuration equipment and DTMF configuration as well as connecting and pre-configuring the telephones one by one. Now you have the tool right in your smartphone.

The SafeLine CONNECT app helps you scan the area for compatible SafeLine units\* and configure all parameters needed, just like in SafeLine Pro – only wireless.

AVAILABLE ON



APPLE APP STORE



GOOGLE PLAY STORE